

MediCell Aluminum Storage System

Optimal Use of Storage Space– Quality, Flexibility
and Durability



The MediCell aluminum modular storage system is a flexible system for the optimal storage of wrapped instrument trays and instrument containers without the need for stacking and risk of damage to instruments and wrapped sets.

Composed of 84" (2140mm) frames with each unit comprised of two uprights connected to each other by a set of four spacer bars. The units are fitted with adjustable leveling feet, optional 4" casters are available on request. The frame is made of high quality anodized aluminum 1.25" (30 x 30 mm) square frame devoid of welds to ensure a hygienic system. The distance between the rails is determined by the customer at 3" (75 mm) intervals. A standard column will accommodate 13 pairs of runners (slides). The loading capacity is designed and tests to a total 1320 lbs. (600kg), maximum 50 lbs. (25kg) per location with nylon plastic slide runners.

This modular system offers endless configurations by joining several units together, e.g. a unit for wrap trays combined with a unit for container trays. Mobile units are also available in combinations of single, double and triple units. There are no restrictions for fixed or stationary units.

MediCell Specifications



ALUMINUM UPRIGHT FRAMES

MODEL No	QTY	DESCRIPTION
UF2-A1	EACH	UPRIGHT FRAME 24.8" X 83.9" (630X2130mm),
UF2-A1-FP	EACH	UPRIGHT FRAME 24.8" X 83.9" (630X2130mm), Seismic Foot Plate
UF-A2	EACH	UPRIGHT FRAME 16.9" X 83.9" (430X2130mm),

SPACER BARS



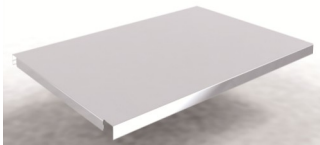
MODEL No	QTY	DESCRIPTION
UF2-A3-01	SET (4)	SPACER BARS 430 for 16" (400mm)wide trays
UF2-A4	SET (4)	SPACER BARS 630 for 24" (600mm)wide trays
UF2-A90	SET (4)	SPACER BARS 900 for 36" (900mm)wide shelves
UF2-A10	SET (4)	SPACER BARS for 40" (1000mm)wide shelves
UF2-A12	SET (4)	SPACER BARS for 48" (1200mm)wide shelves



NYLON SLIDE RUNNERS

MODEL No	QTY	DESCRIPTION
NYGUID600-3	PAIR (2)	NYLON PLASTIC "U" SLIDE RUNNERS (L & R) 23.6" (600mm)

SHELVES



MODEL No	QTY	DESCRIPTION
UF-A13-90	EACH	ALUMINUM ADJUSTABLE SHELF 24.6" x 36" (625 x 900 mm)
UF-A13-10	EACH	ALUMINUM ADJUSTABLE SHELF 24.6" x 40" (625 x 1000 mm)
UF-A13-12	EACH	ALUMINUM ADJUSTABLE SHELF 24.6" x 48" (625 x 1200mm)
UF-S13-90	EACH	STAINLESS STEEL ADJUSTABLE SHELF 24.6" x 36" (625 x 900 mm)
UF-S13-10	EACH	STAINLESS STEEL ADJUSTABLE SHELF 24.6" x 40" (625 x 1000 mm)
UF-S13-12	EACH	STAINLESS STEEL ADJUSTABLE SHELF 24.6" x 48" (625 x 1200mm)

PULL OUT SHELVES



MODEL No	QTY	DESCRIPTION
ISO-SSWIRE	EACH	STAINLESS STEEL PULL OUT WIRE SHELVES, 16" x 23.6"(400 x 600mm)
ISOSS-DUSTSH	EACH	STAINLESS STEEL Dust Shelf 16" x 23.6"(400 x 600mm)
ISOALU-DUSTSH	EACH	ALUMINUM Dust Shelf 16" x 23.6"(400 x 600mm)

MediCell Specifications

WRAP SET SLIDE IN/STACKABLE STAINLESS STEEL STORAGE BASKETS

MODEL No	QTY	DESCRIPTION
ISO604010	EACH	SS SLIDE IN STACKABLE BASKETS FOR WRAP SETS—24" x 16" x 4.0"
ISO604013	EACH	SS SLIDE IN STACKABLE BASKETS FOR WRAP SETS—24" x 16" x 5.2"
ISO604020	EACH	SS SLIDE IN STACKABLE BASKETS FOR WRAP SETS—24" x 16" x 7.9"

* SS WRAP SET SLIDE -IN/STACKABLE BASKETS –Can be used in sterilizers .



CASTERS

MODEL No	QTY	DESCRIPTION
SSC4CB	PAIR (2)	NYLON ALL SWIVEL STEM CASTERS 4" with BRAKES

2 per upright required

POLYCARBONATE or ABS TRAYS + LABELS

MODEL No		DESCRIPTION
PVC	ABS	
M1605	M0605	CLEAR POLYCARBONATE or ABS TRAYS, 600 x 400 x 50mm
M1645	M0645	CLEAR or ABS TRAY DIVIDERS, SHORT - 400 x 50mm
M1665	M0665	CLEAR or ABS TRAY DIVIDERS, LONG –600 x 50mm
M1601	M0601	CLEAR POLYCARBONATE or ABS TRAYS, 600 x 400 x 100mm
M1641	M0641	CLEAR or ABS TRAY DIVIDERS, SHORT - 400 x 100mm
M1661	M0661	CLEAR or ABS TRAY DIVIDERS, LONG –600 x 100mm
M1602	M0602	CLEAR POLYCARBONATE or ABS TRAYS, 600 x 400 x 200mm
M1642	M0642	CLEAR or ABS TRAY DIVIDERS, SHORT - 400 x 200mm
M1662	M0662	CLEAR or ABS TRAY DIVIDERS, LONG –600 x 200mm
MODEL	QTY	DESCRIPTION
MF02020	EACH	LARGE LABEL HOLDER 90 x 58mm
MF02000	EACH	BACK PLATE FOR LABEL HOLDER
MF01100	EACH	LIGHT WEIGHT CARBOARD LABEL INSERT 85 x 54mm



SEE KTW MEDICAL SPEC SHEET Form No PC-ABS TRAY for all models and specifications