

# Decontamination Sinks

## Hydraulic or Stationary Sterile Processing Sink Systems

### STANDARD FEATURES

- 304 #4 18/10 stainless steel material
- Fixed height or adjustable models
- Seamless lever drains
- Skirted sink front
- 6" (152mm) backsplash
- Lower solid stainless steel shelf
- Marine edge
- Graduated sink bowl measurements

### OPTIONS

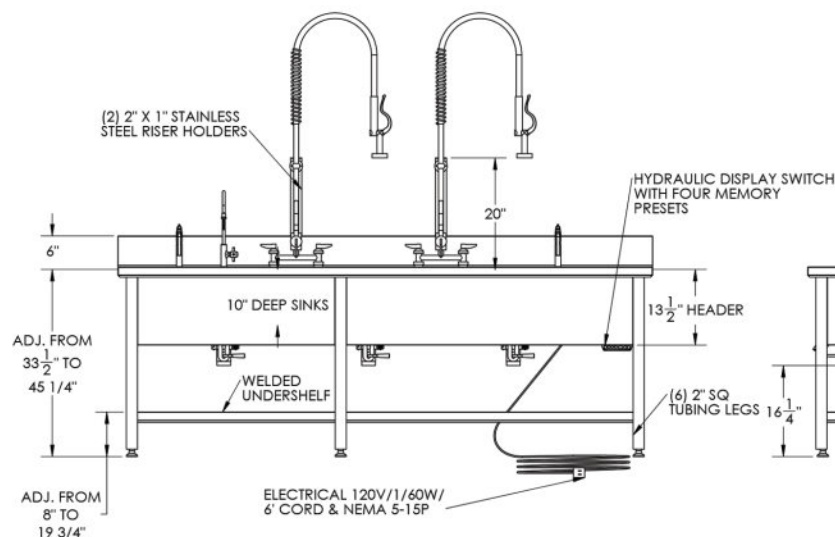
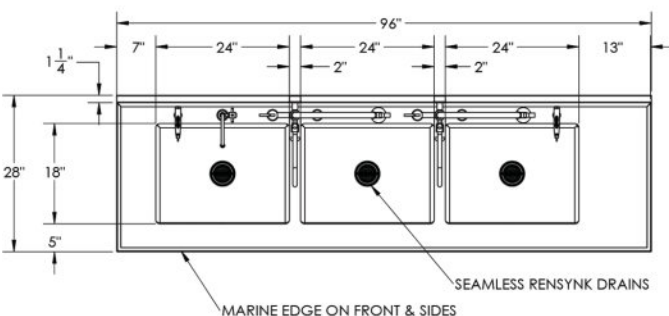
- Customized table size (length and width)
- Number of sink bowls (1-4)
- Faucets/Overhead Spray
- Air and water guns
- Stationary or hydraulic

### SPECIFICATIONS:

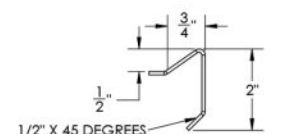
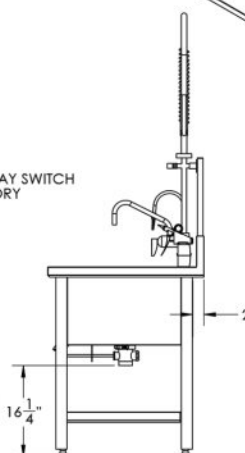
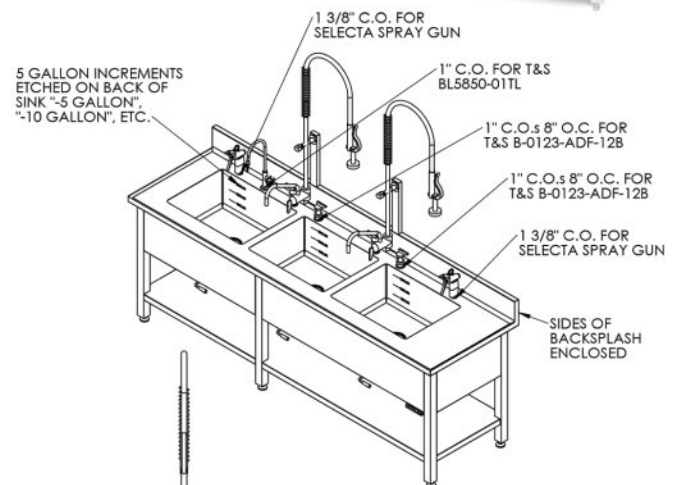
**Sinks:** One piece welded to the table base to form a sterile working surface

**Hydraulics:** Raises/lowers sink table from 33.5" to 45.3" (850 to 1150mm) with four memory presets

**Mechanical:** Drain connection is 1.5" (38mm), water line inlets vary according to faucets ordered



ITEM 1: 3 COMPARTMENT HYDRAULIC SINK  
ONE REQUIRED (1)  
SCALE 3/4"=1'-0"



MARINE EDGE DETAIL

